



FOR MORE INFORMATION

POST National Statistics Office
PO BOX 337, WAIGANI
National Capital District
Papua New Guinea

OR

Telephone +675 325 0244
Facsimile +675 325 1869

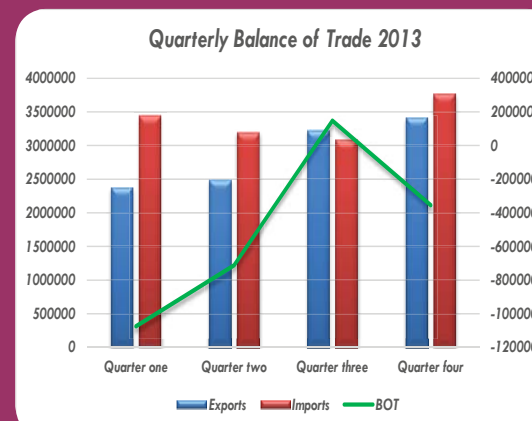
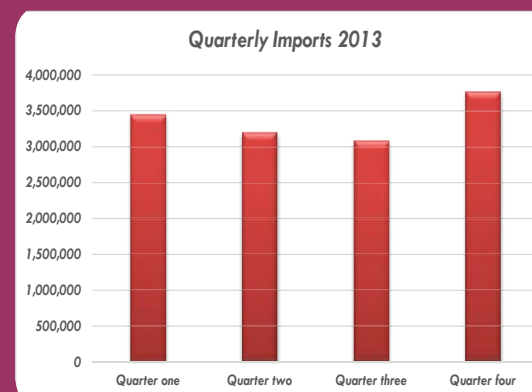
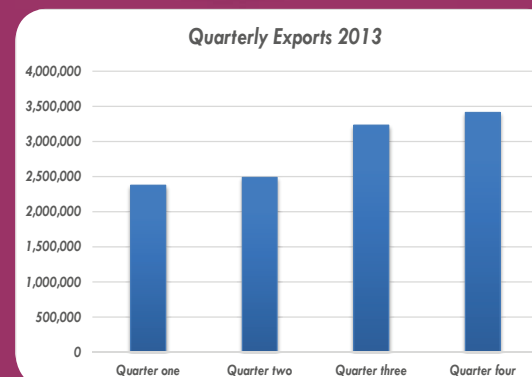
OR

Email HKari@nso.gov.pg
BVaninara@nso.gov.pg
JGoumei@nso.gov.pg
MMoses@nso.gov.pg

INTERNATIONAL MERCHANDISE TRADE
STATISTICS
DECEMBER QUARTER 2013

Selling Price PGK 50.00

ISSN: 1018-6600



INTERNATIONAL MERCHANDISE
TRADE STATISTICS
DECEMBER QUARTER 2013



EMBARGO: 8:30 am (PNG Time) Thursday 2nd April 2015

HS for December Quarter 2013

(PGK 000)

ALL HS SECTIONS	Exports	Imports
I Live animals: animal products	167,972	137,693
II Vegetable products	85,461	225,887
III Animal or vegetable oils & fats	275,863	27,566
IV Prepared foodstuffs, beverages, spirits & tobacco	115,670	239,167
V Mineral products	346,508	9,119
VI Chemicals and allied products	132,409	534,876
VII Plastic, rubber & articles thereof	8,457	218,217
VIII Raw hides, skins, leather articles & travel goods	689	169,648
IX Wood, cork & articles thereof & plaiting material	187,363	5,691
X Wood pulp, paper & paperboard & articles thereof	2,708	122,537
XI Textiles & textile articles	504	87,602
XII Footwear, headgear, umbrellas & parts thereof	79	21,934
XIII Articles of stone, plaster, cement, glass & ceramic products	56	35,658
XIV Pearls, precious & semi-precious stones & metals	1,435,037	474
XV Base metals & articles thereof	166,154	342
XVI Machinery & mechanical & electrical appliances & parts thereof	146,332	320,994
XVII Vehicles, aircraft & associated transport equipment	331,659	1,056,400
XVIII Photographic & optical, medical & surgical goods & clocks/watches & musical instruments	7,297	386,115
XIX Arms and ammunition, parts & accessories thereof	na	59,893
XX Miscellaneous manufactured articles	174	105,375
XXI Works of art, collectors pieces & antiques	75	341
XXII Others	3,585	3,884
Total	3,414,053	3,769,413

SITC for December Quarter 2013

(PGK 000)

	Exports	Imports
0 Food and live animals	247,684	157,770
1 Beverages and tobacco	386,723	303,129
2 Crude materials, inedible, except fuels	488,964	773,937
3 Mineral fuels, lubricants and related materials	888	237,150
4 Animal and vegetable oils, fats and waxes	198,842	218,415
5 Chemicals and related products, not elsewhere specified	60	23,121
6 Manufactured goods classified chiefly by material	550	105,166
7 Machinery and transport equipment	1,597,022	289,088
8 Miscellaneous manufactured goods	482,188	1,491,803
9 Commodities and transactions not classified elsewhere in SITC	11,131	169,834
Total	3,414,053	3,769,413



NOTES

For Further Information, contact the Economics Statistics Division of the;

NATIONAL STATISTICAL OFFICE**PO BOX 337****WAIGANI****NATIONAL CAPITAL DISTRICT****OF PAPUA NEW GUINEA****Telephone:** + (675) 325 0244**Facsimile:** +(675) 325 7040**Email:** info@nso.gov.pg**Website** www.nso.gov.pg**NATIONAL STATISTICIAN:** **MR. ROKO KOLOMA**

Compiled and Published by the; **International Merchandise Trade Statistics Section**

International Trade Statistics Branch**Port Moresby****March 2015**

NOTES

ABBREVIATIONS USED

BEC	<i>Broad Economic Category</i>
CET	<i>Common External Tariff</i>
c.i.f.	<i>cost including insurance and freight</i>
CPC	<i>Customs Procedure Classifications Codes</i>
f.o.b.	<i>free on board</i>
FTZ	<i>Free Trade Zones</i>
HS	<i>Harmonized Commodity Description and Coding System (2012)</i>
IMTS	<i>International Merchandise Trade Statistics</i>
IMTS 2010	<i>International Merchandise Trade Statistics Concepts and Definitions 2010</i>
ITSB	<i>International Trade Statistics Branch of NSO - PNG</i>
MSG	<i>Melanesian Spearhead Group</i>
NSO - PNG	<i>National Statistics Office of Papua New Guinea</i>
PICT	<i>Pacific Island Countries and Territories</i>
PNG	<i>PAPUA NEW GUINEA</i>
PNG - LNG	<i>Papua New Guinea Liquefied Natural Gas</i>
SITC	<i>Standard International Trade Classification</i>



Contents

Page 2.	EXPLANATORY NOTES
Page 2.	RECENT UPDATES
Page 3.	DATA SOURCES
Page 3.	REPORTING PERIOD
Page 3, 4, and 5	COVERAGE
	<input type="checkbox"/> Inclusions
	<input type="checkbox"/> Exclusions
Page 5.	CLASSIFICATION SYSTEMS:
Page 5.	VALUATION:
Page 6.	QUANTITY:
Page 6.	PARTNER COUNTRIES:
Page 6.	ROUNDING OF FIGURES:
Page 6.	SYMBOLS:
Page 6.	SOURCES OF FURTHER INFORMATION:
Page 6.	REVISION PROCEDURE:
Page 7 - Page 41	TABLES

Questions, comments or requests for further details



TABLE 16

		IMPORTS BY SITC PGK 000						
Sections	Economic Category	ANNUALLY			Quarterly			
		2011	2012	2013	Quarter 1	Quarter 2	Quarter 3	Quarter 4
0	Food and live animals	1,495,586	2,170,255	542,333	129,723	131,347	123,494	157,770
1	Beverages and tobacco	68,127	104,480	1,062,415	246,447	230,880	281,959	303,129
2	Crude materials, inedible, except fuels	122,309	48,564	2,415,699	630,441	536,301	475,020	773,937
3	Mineral fuels, lubricants and related materials	91,315	488,786	955,415	216,498	244,600	257,167	237,150
4	Animal and vegetable oils, fats and waxes	54,416	91,979	797,084	210,654	185,285	182,730	218,415
5	Chemicals and related products, not elsewhere specified	923,185	1,843,016	79,163	16,587	18,699	20,756	23,121
6	Manufactured goods classified chiefly by material	2,837,505	2,921,305	383,593	100,431	87,371	90,626	105,166
7	Machinery and transport equipment	5,795,659	5,665,426	1,192,120	331,034	321,427	250,571	289,088
8	Miscellaneous manufactured goods	1,221,034	1,499,957	5,542,179	1,451,007	1,321,323	1,278,046	1,491,803
9	Commodities and transactions not classified elsewhere in SITC	1,191,527	203	537,725	118,800	124,605	124,487	169,834
Total Imports		13,800,663	14,833,972	13,507,727	3,451,621	3,201,837	3,084,857	3,769,413

TABLE 15

		EXPORTS BY SITC						
		PGK 000			Quarterly			
Sections	Economic Category	ANNUALLY			Quarterly			
		2011	2012	2013	Quarter 1	Quarter 2	Quarter 3	Quarter 4
0	Food and live animals	1,773,369	1,263,360	687,298	146,138	146,952	146,525	247,684
1	Beverages and tobacco	4,693	1,882	1,640,873	379,652	408,886	465,612	386,723
2	Crude materials, inedible, except fuels	2,551,840	2,657,562	1,610,909	358,530	478,809	284,606	488,964
3	Mineral fuels, lubricants and related materials	236,353	148,171	13,066	996	1,084	10,098	888
4	Animal and vegetable oils, fats and waxes	1,894,422	1,223,438	655,644	134,608	190,688	131,505	198,842
5	Chemicals and related products, not elsewhere specified	46,285	331,137	128	1	62	5	60
6	Manufactured goods classified chiefly by material	5,453,755	3,163,573	1,337	335	223	229	550
7	Machinery and transport equipment	1,105,673	1,466,313	4,788,394	1,253,926	1,079,838	857,608	1,597,022
8	Miscellaneous manufactured goods	84,721	55,035	2,076,599	96,795	172,864	1,324,751	482,188
9	Commodities and transactions not classified elsewhere in SITC	113,783	39,241	38,917	5,616	10,723	11,447	11,131
Total Exports		13,264,894	10,349,711	11,513,166	2,376,596	2,490,130	3,232,387	3,414,053

2013 PNG MERCHANDISE TRADE OVERVIEW

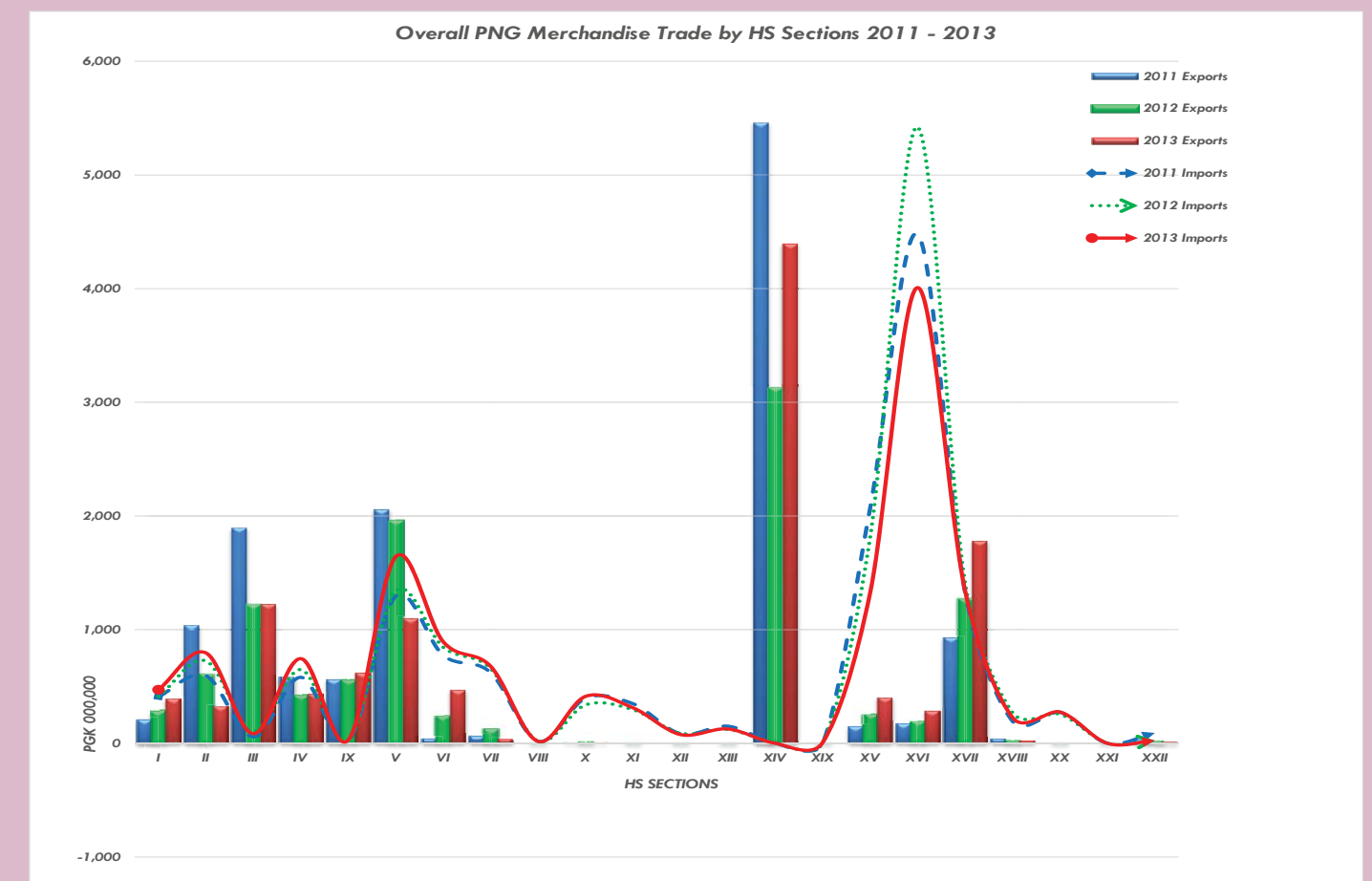
In 2011, Papua New Guinea's exports amounted to K13.3 billion; a significant increase of 23% from the previous year (See table 1). In 2012, however total exports decreased by 22% and increased again by 6% in 2013.

Imports showed a similar development with a decline in growth rate of 6% in 2011, and slightly increase in 2012 by 7%, however, it decrease by 9% to reach K13.5 billion (Refer Table 1). This resulted in a Trade balance K 1.9 billion deficit in 2013.

Bi-lateral Trade agreements were also entered into with members of the Melanesian Spearhead Group, in particular Fiji. The Bilateral agreement with Fiji came into effect in 2012 enabling Trade between both countries to commence.

International Trade with other countries also increased marking an increase in total exports.

Re-exports which comprised largely of leased machinery used in the construction phase of LNG sites increased by 87% during the 2011-2012 periods, however, decline by 60% in 2012. This is due to final phase in the construction activity.



EXPLANATORY NOTES

The Explanatory Notes present an overview of Papua New Guinea's International Merchandise Trade Statistics including coverage and time of recording, sources of data, commodity classifications, valuation, quantity measurement, partner country, reporting and dissemination as well as revision procedures. It also presents information on updated methodologies and practices. This bulletin also includes Tables on Trade by Agreements between PNG and partner Countries

RECENT UPDATES:

The name of the annual bulletin has been changed from separate "International Trade Statistics Imports and Exports Bulletin" to a single "International Merchandise Trade Statistics Bulletin". The change of name better reflects the statistics presented in this report which relates to trade in merchandise only.

In addition, the National Statistics Office of PNG (NSO- PNG) as part of its efforts to better meet the needs of our data users have now included the following tables.

Table 1	BALANCE OF TRADE -ALL ITEMS *
Table 2	IMPORTS BY HS *
Table 3	IMPORTS BY PORT OF ENTRY*
Table 4	IMPORTS BY COUNTRY OF ORIGIN*
Table 5	DOMESTIC EXPORTS BY HS *
Table 6	RE-EXPORTS BY HS *
Table 7	TOTAL EXPORTS BY HS *
Table 8	EXPORTS BY PORT OF DESPATCH*
Table 9	EXPORTS BY COUNTRY OF DESTINATION*
Table 10	PRINCIPAL DOMESTIC EXPORTS *
Table 11	PRINCIPAL IMPORTS *
Table 12	BALANCE OF TRADE BY MAJOR PARTNER COUNTRIES *
Table 13	TRADE BY REGION *
Table 14	TRADE BY MODE OF TRANSPORT *
Table 15	EXPORTS BY SITC (Standard International Trade Classification)
Table 16	IMPORTS BY SITC (Standard International Trade Classifications)

Tables not included are listed below as;

Table 17	RETAINED IMPORTS CLASSIFIED BY BEC (Broad Economic Categories)
Table 18	TRADE BY AGREEMENTS

Also data is presented to allow for comparison with previous periods.

TABLE 14

		TRADE BY MODE OF TRANSPORT						
		[PGK 000]						
		Mode of transport						
		Category						
Period		Air	Water	Land	Not elsewhere classified		Others	Total
			Sea	Road	Postal consignments, mail or courier shipments	Self-propelled goods		
ANNUALLY								
2011	Exports	5,391,214	7,231,191					12,622,406
	Imports	1,840,416	11,955,147	2,342	712		2,045	13,800,663
2012	Exports	3,631,885	6,716,026	35	1,766		0	10,349,711
	Imports	1,683,064	13,148,056	867	378		1,607	14,833,972
2013	Exports	4,712,160	6,801,084	1	0		0	11,513,244
	Imports	2,234,540	11,268,864	2,237	381		1,705	13,507,727
QUARTERLY								
Quarter 1	Exports	1,211,331	1,165,265	0	0			2,376,596
	Imports	613,862	2,837,702	1	22		34	3,451,621
Quarter 2	Exports	964,384	1,525,744	1	0			2,490,130
	Imports	507,593	2,691,622	1,467	276		880	3,201,837
Quarter 3	Exports	771,420	2,460,967	0	0			3,232,387
	Imports	462,680	2,621,544	316	70		248	3,084,857
Quarter 4	Exports	1,765,024	1,649,107	0	0			3,414,131
	Imports	650,405	3,117,997	453	14		544	3,769,413

* Goods Classified under rail transport is being added to Road Transport.

TABLE 13

TRADE BY REGION
[PGK 000]

REGION		ANNUALLY			Quarterly			
		2011	2012	2013	Quarter 1	Quarter 2	Quarter 3	Quarter 4
Africa	Exports	19,841	6,504	20,968	444	1,500	18,867	159
	Imports	103,798	22,072	31,727	2,336	1,332	20,893	7,166
	Balance	-83,957	-15,568	-10,759	-1,892	168	-2,026	-7,007
The Americas	Exports	560,373	546,250	604,528	65,750	56,046	87,656	395,076
	Imports	981,648	1,143,343	717,611	174,303	193,849	182,728	166,731
	Balance	-421,275	-597,093	-113,083	-108,553	-137,803	-95,072	228,345
Asia	Exports	8,874,718	8,889,952	6,549,009	1,392,850	1,634,441	1,327,956	2,193,761
	Imports	5,936,992	6,410,333	6,298,065	1,591,515	1,418,548	1,407,057	1,880,946
	Balance	2,937,727	2,479,619	250,944	-198,665	215,893	-79,101	312,815
Europe	Exports	5,597,005	4,178,952	5,004,483	822,024	1,146,448	1,954,956	1,081,052
	Imports	769,325	1,478,869	918,876	246,974	200,466	191,750	279,687
	Balance	4,827,680	2,700,083	4,085,607	575,050	945,982	1,763,206	801,365
Oceania	Exports	11,259,119	7,020,782	10,586,538	2,449,307	2,123,264	3,040,548	2,973,420
	Imports	5,959,066	5,675,130	5,466,103	1,421,027	1,373,406	1,256,659	1,415,011
	Balance	5,300,053	1,345,652	5,120,435	1,028,280	749,858	1,783,889	1,558,409
TOTAL	Exports	13,264,889	10,349,711	11,513,166	2,376,596	2,490,130	3,232,387	3,414,053
	Imports	13,800,663	14,833,972	13,507,727	3,451,621	3,201,837	3,084,856	3,769,413
	Balance	-535,774	-4,484,261	-1,994,561	-1,075,025	-711,707	147,531	-355,360
of which the PICTs	Exports	112,524	56,992	74,199	22,294	17,527	16,590	17,788
	Imports	49,834	104,225	75,343	15,466	14,236	25,769	19,872
	Balance	62,690	-47,233	-1,144	6,828	3,291	-9,179	-2,084

DATA SOURCES:

The International Merchandise Trade Statistics presented by the NSO – PNG are compiled primarily from the administrative records of the PNG Customs Services. The PNG Customs Services is responsible for the control of the flow of goods in and out of PNG. When goods enter or leave PNG, declarations must be filed with the Customs Services, giving such information as the Dates, CPC Codes, HS codes and descriptions, quantity and value of the goods, the country of origin of the commodities and the mode of transportation.

Most of this information is captured in forms electronically in the ASYCUDA ++ format from automated post and the remainder of posts are non-automated and paper sent to the PNG Customs Services Head Office in Port Moresby for entries.

Supplementary data on the trade in certain major commodities (exports of Cocoa, Coffee, and Logs etc.) are also collected from the relevant importing/exporting Commodity Boards and other reliable independent sources. Though the ITSB obtains such Statistical Bulletins, these statistics are only used for analysis and used as appropriate.

REPORTING PERIOD:

Annual trade statistics are compiled on the basis of the Gregorian calendar year, while statistics relating to the fiscal year are compiled for the twelve month period beginning January 1 of one year and ending on December 31 of the same year accordingly to the Trade Statistical Territory.

The data contained in the IMTS presented by NSO reflect the data derived from data sets submitted to NSO by the Customs Services for that period. Therefore, the figures for imports and exports shown may not necessarily represent the actual amount of goods arriving in or departing from the ports and airports during the specified period.

In general, the data are recorded in the calendar month in which the Customs procedures have been completed. This at times may result in discrepancies between the data published by NSO and that obtained from other sources.

COVERAGE:

The figures contained in this report represent PNG's merchandise trade based on the "General System" of trade as defined by the IMTS 2010. Under this system, imports include all goods from general procedure for home use which have come into PNG.

Exports are a combination of domestic exports and re-exports. Domestic exports include commodities grown in the country, extracted from its natural resources or manufactured in the country. These include goods of foreign origin which have been assembled or materially transformed in the country.

Re-exports are exports of goods of foreign origin which have NOT been materially transformed while in PNG. These include goods that are basically used for the Capital formations such an example of the PNG – LNG development stages.

□ Inclusions

Included in the International Merchandise Trade Statistics presented by NSO are:

- Export of goods of PNG origin - General Procedure
- Export of goods from a bond
- Export of locally excisable goods from a bond

- Re-export after temporary import
- Re-export after customs inward processing procedure in FTZ
- Re-export after customs warehousing procedure from Public Bonds
- Re-export after customs warehousing procedure from Private Bonds
- Re-export after customs warehousing procedure from Machinery Bonds
- Re-export after customs warehousing procedure from Manufacturing Bonds
- Imports of Direct entry for home use
- Fiji-PNG Bilateral Agreement
- Melanesian Spearhead Group (MSG)

Exclusions

The following are excluded from the International Merchandise Trade Statistics presented by NSO:

- Temporary export of goods
- Temporary Export of duty paid imported goods for repair and return
- Temporary Export for return in an unaltered state
- Temporary Export for outward processing
- Entry for home use after Temporary Import for return in an unaltered state
- Entry for home use after Temporary Import for inward processing
- Entry for home use after warehousing from Public Bonds
- Entry for home use after warehousing from Private Bonds
- Entry for home use after warehousing from Machinery Bonds
- Entry for home use after warehousing from Manufacturing Bonds
- Temporary import for return in unaltered state.
- Temporary import for customs inward processing procedure
- Re-Importation of Temporary Export
- Re-import after Temporary Export for return in an unaltered state
- Re-import after Temporary Export for customs outward processing
- Customs warehousing procedure for Public Bonds
- Transfer from Public Bond to Public Bond
- Customs warehousing procedure for Private Bonds

TABLE 12 cont.

BALANCE OF TRADE BY MAJOR PARTNER COUNTRIES

		[PGK 000]			Quarterly			
		ANNUALLY			Quarter 1	Quarter 2	Quarter 3	Quarter 4
COUNTRY		2011	2012	2013				
China, Hong Kong Special Administrative Region	Exports	39,948	32,944	28,472	11,073	6,178	5,095	6,126
	Imports	287,638	228,711	262,019	59,724	72,052	61,177	69,066
	Balance	- 247,690	- 195,767	- 233,547	- 48,651	- 65,874	- 56,082	- 62,941
Democratic People's Republic of Korea	Exports	376,104	255,283	177,534	48,835	30,047	39,352	59,299
	Imports	283,460	278,684	185,021	55,548	29,845	41,270	58,358
	Balance	92,644	- 23,401	- 7,487	6,714	202	- 1,917	942
Italy	Exports	419,714	126,203	191,079	36,984	46,314	42,074	65,707
	Imports	86,870	682,823	166,242	35,539	48,275	27,620	54,808
	Balance	332,844	- 556,620	24,837	1,445	- 1,961	14,453	10,900
United Kingdom of Great Britain and Northern Ireland	Exports	416,632	314,147	802,725	74,617	79,481	543,753	104,873
	Imports	138,929	158,268	154,323	49,568	45,876	30,972	27,907
	Balance	277,703	155,880	648,401	25,049	33,606	512,781	76,966
India	Exports	195,304	424,477	173,386	7,973	32,747	128,194	4,472
	Imports	73,539	91,569	126,631	23,074	18,393	21,876	63,286
	Balance	121,765	332,907	46,755	- 15,101	14,353	106,317	- 58,814
Canada	Exports	11,661	1,030	11,489	811	-	153	10,526
	Imports	129,900	74,107	117,736	32,291	55,774	20,474	9,197
	Balance	- 118,239	- 73,077	- 106,247	- 31,480	- 55,774	- 20,321	1,329
Germany	Exports	819,098	660,909	349,691	45,601	120,099	104,517	79,474
	Imports	129,026	140,497	106,120	14,431	29,809	37,489	24,391
	Balance	690,072	520,411	243,571	31,170	90,290	67,028	55,083
Others	Exports	1,793,712	1,520,346	1,745,755	331,330	448,613	405,328	560,483
	Imports	969,009	1,020,304	893,473	231,564	158,540	209,603	293,766
	Balance	824,703	500,041	852,281	99,766	290,073	195,725	266,717
TOTAL	Exports	13,264,889	10,349,711	11,513,166	2,376,596	2,490,130	3,232,387	3,414,053
	Imports	13,800,663	14,833,972	13,507,727	3,451,621	3,201,837	3,084,856	3,769,413
	Balance	- 535,774	- 4,484,261	- 1,994,562	- 1,075,025	- 711,707	147,530	- 355,360

TABLE 12

BALANCE OF TRADE BY MAJOR PARTNER COUNTRIES

[PGK 000]

COUNTRY		ANNUALLY			Quarterly			
		2011	2012	2013	Quarter 1	Quarter 2	Quarter 3	Quarter 4
Australia	Exports	5,587,949	3,491,689	5,261,120	1,218,711	1,054,923	1,509,594	1,477,892
	Imports	5,545,492	5,192,013	4,932,099	1,288,248	1,245,046	1,127,693	1,271,113
	Balance	42,457	- 1,700,324	329,021	- 69,537	- 190,123	381,901	206,779
Singapore	Exports	1,366,796	1,457,911	215,292	26,400	46,027	69,610	73,255
	Imports	1,581,990	2,006,460	1,881,892	503,883	481,059	361,031	535,919
	Balance	- 215,194	- 548,549	- 1,666,601	- 477,483	- 435,032	- 291,422	- 462,664
China	Exports	617,319	550,753	798,071	142,878	174,511	178,659	302,023
	Imports	1,045,321	1,182,580	1,382,323	309,131	289,490	356,128	427,574
	Balance	- 428,002	- 631,827	- 584,251	- 166,253	- 114,980	- 177,469	- 125,550
Malaysia	Exports	297,733	164,463	171,135	45,292	40,711	46,709	38,423
	Imports	537,001	584,812	781,441	237,311	163,756	135,297	245,077
	Balance	- 239,268	- 420,349	- 610,306	- 192,019	- 123,046	- 88,588	- 206,653
United States of America	Exports	258,917	170,793	267,562	31,845	25,140	43,668	166,909
	Imports	810,528	1,008,473	577,278	134,780	133,882	158,639	149,977
	Balance	- 551,611	- 837,680	- 309,716	- 102,935	- 108,742	- 114,971	16,933
New Zealand	Exports	41,551	18,702	31,788	5,709	6,581	10,680	8,818
	Imports	413,556	483,117	533,954	132,780	128,360	128,949	143,865
	Balance	- 372,004	- 464,416	- 502,166	- 127,071	- 121,779	- 118,269	- 135,047
Japan	Exports	913,115	975,315	1,154,441	329,991	354,939	87,712	381,800
	Imports	602,043	632,340	441,198	125,725	108,858	100,571	106,044
	Balance	311,072	342,975	713,244	204,266	246,081	- 12,859	275,756
Indonesia	Exports	41,523	88,525	23,659	6,477	5,328	7,356	4,498
	Imports	607,558	379,126	349,545	65,811	81,884	105,502	96,349
	Balance	- 566,035	- 290,601	- 325,886	- 59,334	- 76,556	- 98,146	- 91,850
Thailand	Exports	31,136	57,393	49,355	3,305	10,266	4,328	31,456
	Imports	395,291	512,584	332,914	90,012	84,947	79,097	78,858
	Balance	- 364,154	- 455,190	- 283,559	- 86,707	- 74,681	- 74,769	- 47,402
Taiwan	Exports	36,678	38,829	60,613	8,765	8,225	5,606	38,017
	Imports	163,511	177,502	283,518	62,200	25,990	81,467	113,860
	Balance	- 126,834	- 138,673	- 222,905	- 53,436	- 17,765	- 75,861	- 75,843

- Transfer from Public Bond to Private Bond
- Transfer from Private Bond to Private Bond
- Transfer from Manufacturing Bond to Private Bond
- Customs warehousing procedure for Machinery Bonds
- Transfer from Machinery Bond to Machinery Bond
- Warehousing procedure for Manufacturing Bonds for inward processing
- Transfer from Public Bond to Manufacturing Bond
- Transfer from Private Bond to Manufacturing Bond
- Customs transshipment procedure for transshipped goods
- Entry for home use for local excise
- Entry for home use after Customs warehousing procedure - Local excise
- Customs warehousing procedure for locally manufactured goods
- Customs warehousing procedure for bond to bond transfer - Local excise

CLASSIFICATION SYSTEMS:

The import and export data are recorded using PNG's adaptation of the Harmonized Commodity Description and Coding System (HS). Currently data is being recorded using PNG's adaptation of the Harmonized System 2012 version (HS2012). The HS is used primarily for Customs purposes and represents a multipurpose goods nomenclature according to their degree of manufacture.

This data is converted on a one to one relationship to an extended version of the Standard International Trade Classification (SITC). *SITC, Revision 4 (Rev. 4)*. The SITC is essentially an economic classification which categorizes items by type, e.g. Food, Beverages, Mineral Fuels, Chemicals, Manufactured Goods, Machinery and Equipment and provides an appropriate basis for the analysis of merchandise trade data. Allied to the SITC is an End-Use or Economic Function Classification which groups goods into the following broad categories (BEC): -

I. Consumer Goods

II. Raw Materials and or Intermediate Goods

III. Capital Goods

VALUATION:

For Customs purposes, imports are recorded at values established according to the provisions of the Customs Act. In general it requires that the value for duty of imported goods be equivalent to the transaction value or the price actually paid or payable. Imports are valued on the cost including insurance and freight (c.i.f.) basis which represents the cost to the importer of buying the goods and bringing them to this country, but excluding customs or any other duty paid on arrival.

Exports are shown on a free on board (f.o.b.) valuation basis, i.e. the value of the goods including charges up to delivery on board the exporting vessel. Values shown are primarily recorded in terms of PNG Kina.

QUANTITY:

All quantities and values are based on the declaration of importers/exporters on the customs documents which are subject to verification by Customs Officials. Quantities are normally expressed in terms of the unit of quantity specified by the Common External Tariff (CET).

Measures of weight and volume generally exclude any packaging required for shipment and "numbers" relate to complete units, and do not include parts.

PARTNER COUNTRIES:

The statistics in this report refer to merchandise trade between PNG and the rest of the world. Imports are credited to "Country of Origin or Manufacture" or, where origin cannot be established the country of consignment is used.

Exports are assigned to the "Country of Last Known Destination", that is the last country to which the goods are to be shipped from PNG without, as far as known, any commercial transaction in an intermediate territory, irrespective of whether or not bulk has been broken in the course of transport.

ROUNDING OF FIGURES:

In a number of tables presented in IMTS publication generated by NSO, the figures are rounded to the nearest thousand. As a result, addition of the rounded figures may not always exactly agree with the rounded totals shown in the tables.

SYMBOLS:

The following symbols are used in these reports

na	not available
- or 0	Nil or below PGK 1 000 000
r	Revised since previously published
p	Preliminary figures

SOURCES OF FURTHER INFORMATION:

Detailed reports based on a number of commodity classifications are available from the International Trade Statistics Branch (ITSB). Where further disaggregation is desired, NSO undertakes research of unpublished data at a cost, providing the data required conforms to NSO's data dissemination standards.

REVISION PROCEDURE:

Statistics for quarters published in the bulletin, contains preliminary figures. These figures are subsequently revised and published as final in the next years International Merchandise Trade Statistics Bulletins.

TABLE 11

Commodity	PRINCIPAL DOMESTIC IMPORTS						
	ANNUALLY			Quarterly			
	2011	2012	2013	Quarter 1	Quarter 2	Quarter 3	Quarter 4
Diesel	603,150	136,989	811,264	231,581	171,743	144,649	263,291
RICE	72,153	332,999	463,069	108,774	103,092	112,888	138,315
TRUCKS FITTED WITH A CRANE	290,363	7,914	400,425	104,079	104,403	86,503	105,440
Aeroplanes and other aircrafts	107,699	190	313,059	116,495	63,499	24,737	108,328
Fuel oils, heavy	150,480	44,354	289,010	77,963	65,315	44,511	101,222
Unused postage	128,709	1,544	183,851	59,383	39,021	30,339	55,109
Parts for boring or sinking machinery	130,796	25,460	144,042	33,780	26,039	54,804	29,419
Lubricating oils and greases	-	50,657	124,653	31,899	27,326	29,216	36,212
PARTS AND ACCESSORIES OF THE MOTOR VEHICLES	114,404	125,015	122,847	32,140	36,907	25,089	28,710
Parts of aeroplanes or helicopters	137,975	7,046	118,413	27,874	30,760	25,549	34,229
Prefabricated buildings	135,927	763	118,304	14,034	29,169	15,529	59,572
Motor spirit (gasoline)including aviation spirit	-	28	117,502	56,834	26,704	12,043	21,921
Other Meat cuts with bone	122,226	9,812	107,570	21,587	28,871	26,368	30,744
Bridges and bridge sections	180,045	3,138	101,551	24,648	29,335	34,702	12,866
New pneumatic tyres, of rubber of a kind used on buses or lorries	86,511	1,612	97,053	27,235	27,440	18,842	23,535
Other mechanical showels, excavators and shovel loaders	82,627	5,876	96,064	16,498	11,873	38,062	29,631
OTHER IMPORTS	11,457,597	14,080,574	9,899,052	2,466,819	2,380,340	2,361,025	2,690,867
Total	13,800,663	14,833,972	13,507,727	3,451,621	3,201,837	3,084,857	3,769,413

TABLE 10 cont.

Commodity	PRINCIPAL DOMESTIC EXPORTS [PGK 000]						
	ANNUALLY			Quarterly			
	2011	2012	2013	Quarter 1	Quarter 2	Quarter 3	Quarter 4
Dark Red Meranti, Light Red Meranti and Meranti Bakau	82,802	128,568	137,598	14,742	54,974	32,332	35,549
Cocoa beans, whole or broken, raw or roasted	337,729	173,888	124,211	40,457	20,062	28,117	35,574
Plantation logs	95,398	104,079	119,034	22,930	28,605	33,647	33,851
Yellowfin tunas	59,539	65,517	117,310	13,633	18,620	15,812	69,246
Skipjack or stripe-bellied bonito	9,392	48,905	103,743	19,369	17,844	21,184	45,347
Other Exports	2,696,078	2,411,760	1,519,572	273,450	339,645	404,045	502,432
Total	13,264,894	10,349,711	11,513,166	2,376,596	2,490,130	3,232,387	3,414,053

TABLE 1

Period	BALANCE OF TRADE - ALL ITEMS [PGK 000]				
	Domestic	Exports FOB		Imports CIF	Trade Balance Surplus(+) / Deficit(-)
		Re-exports	Total		
Annually					
2005	5,224,680	na	5,224,680	5,256,062	-31,382
2006	7,716,950	na	7,716,950	5,965,548	1,751,402
2007	5,161,591	na	5,161,591	4,207,847	953,744
2008	6,969,371	na	6,969,371	9,305,430	-2,336,058
2009	7,761,473	na	7,761,473	10,906,659	-3,145,186
2010	10,821,752	na	10,821,752	14,614,847	-3,793,095
2011	12,622,406	642,488	13,264,894	13,800,663	-535,769
2012	9,151,300	1,198,411	10,349,711	14,833,972	-4,484,261
2013	11,031,227	481,938	11,513,166	13,507,727	-1,994,562
Quarterly 2013					
Quarter one	2,337,123	39,473	2,376,596	3,451,621	-1,075,025
Quarter two	2,387,711	102,419	2,490,130	3,201,837	-711,707
Quarter three	3,168,049	64,338	3,232,387	3,084,857	147,530
Quarter four	3,138,344	275,708	3,414,053	3,769,413	-355,360

TABLE 2

IMPORTS BY HS

[PGK 000]

Annually

Quarterly

HS SECTIONS	2011	2012	2013	Quarterly			
				Quarter 1	Quarter 2	Quarter 3	Quarter 4
I Live animals: animal products 01 -05	413,119	412,258	472,091	112,068	114,385	107,945	137,693
II Vegetable products 06 -14	594,396	724,417	795,848	190,245	168,427	211,289	225,887
III Animal or vegetable oils & fats 15	56,575	108,701	84,888	19,045	16,048	22,230	27,566
IV Prepared foodstuffs, beverages, spirits & tobacco 16 - 24	580,320	648,466	745,437	165,595	175,363	165,313	239,167
V Mineral products 25 - 27	1,295,612	1,338,046	1,641,918	454,204	357,816	295,022	534,876
VI Chemicals and allied products 28 - 38	774,652	845,466	894,490	205,269	229,456	241,548	218,217
VII Plastic, rubber & articles thereof 39 - 40	622,569	657,471	678,257	168,042	168,921	171,646	169,648
VIII Raw hides, skins, leather articles & travel goods 41 - 43	17,836	19,245	18,084	3,422	4,063	4,909	5,691
IX Wood, cork & articles thereof & plaiting material 44 - 46	25,334	36,714	28,588	6,298	6,845	6,326	9,119
X Wood pulp, paper & paperboard & articles thereof 47 - 49	396,463	337,645	413,347	109,577	87,088	94,145	122,537
XI Textiles & textile articles 50 - 63	348,142	295,541	313,029	81,163	69,358	74,905	87,602
XII Footwear, headgear, umbrellas & parts thereof 64 - 67	84,502	88,101	77,466	18,992	18,193	18,347	21,934
XIII Articles of stone, plaster, cement, glass & ceramic products 68 - 70	150,375	122,047	126,659	32,122	29,081	29,797	35,658

TABLE 10

PRINCIPAL DOMESTIC EXPORTS

[PGK 000]

ANNUALLY

Quarterly

Commodity	2011	2012	2013	Quarterly			
				Quarter 1	Quarter 2	Quarter 3	Quarter 4
Base metals, silver or gold, clad with platinum, not further worked than semi-manufacture	5,377,070	3,105,395	3,905,543	1,132,319	921,924	604,477	1,246,822
Tugs and pusher craft	904	444,170	1,159,999	145	24,416	1,134,888	550
PALM CRUDE OIL	1,391,144	953,858	920,837	234,999	230,068	253,769	202,001
Copper ores and concentrates	1,053,952	844,706	673,215	116,983	141,762	126,527	287,945
1-Naphthylamine (alpha-naphthylamine), 2-naphthylamine (betanaphthylamine)	-	239,066	466,787	109,372	148,420	77,429	131,566
Other semi-manufactured forms	-	24,073	368,622	47,423	81,773	115,086	124,341
Nickel oxide sinters & other intermediate products of nickel metallurgy	-	6,753	327,907	51,429	57,762	73,399	145,318
Gold ores and concentrates	630,670	641,408	295,684	106,715	154,506	28,351	6,112
Aeroplanes and other aircrafts, of an unladen weight > 2,000 kg and =< 15,000 kg	6,253	77,951	291,761	-	1,980	16,644	273,136
Not decaffeinated (raw coffee in all forms)	956,565	527,954	280,422	52,455	66,683	86,922	74,363
Treated with paint, stains, creosote or other preservatives	280,091	239,642	274,015	68,958	75,900	41,102	88,056
Tunas, skip-jack and Atlantic bonito	187,383	212,365	244,833	31,013	62,187	87,312	64,321
PALM OIL Packed in Containers	99,925	99,655	182,072	40,205	42,999	51,343	47,524

TABLE 9 cont.

EXPORTS BY COUNTRY OF DESTINATION
[PGK 000]

Country	ANNUALLY			Quarterly			
	2011	2012	2013	Quarter 1	Quarter 2	Quarter 3	Quarter 4
Tonga	395	60	34	34	-	-	-
Tunisia	na	1	na	na	na	na	na
Tuvalu	na	na	0	-	0	-	-
Ukraine	na	519	108	-	-	108	-
United Arab Emirates	1,202	907	39,091	3,150	14,065	10,231	11,645
United Kingdom of Great Britain and Northern Ireland	416,632	314,147	802,725	74,617	79,481	543,753	104,873
United Republic of Tanzania	467	100	15	-	-	15	-
United States of America	258,917	170,793	267,562	31,845	25,140	43,668	166,909
Vanuatu	7,224	1,044	2,194	310	568	160	1,156
Venezuela (Bolivarian Republic of)	na	na	8	-	-	-	8
Vietnam	20,007	17,922	13,683	674	3,307	3,847	5,855
VIRGIN ISLANDS (USA)	775	na	na	na	na	na	na
Wallis and Futuna Islands	na	24	na	na	na	na	na
Zambia	1	na	na	na	na	na	na
TOTAL	13,264,889	10,349,711	11,513,166	2,376,596	2,490,130	3,232,387	3,414,053

TABLE 2 cont

IMPORTS BY HS
[PGK 000]

HS SECTIONS		Annually			Quarterly				
		2011	2012	2013	Quarter 1	Quarter 2	Quarter 3	Quarter 4	
XIV	Pearls, precious & semi-precious stones & metals	71	1,263	1,531	1,454	248	438	294	474
XV	Base metals & articles thereof	72 - 83	2,071,865	1,815,650	1,326,832	365,808	355,571	284,459	320,994
XVI	Machinery & mechanical & electrical appliances & parts thereof	84 - 85	4,478,921	5,420,255	4,009,520	1,031,609	955,546	965,966	1,056,400
XVII	Vehicles, aircraft & associated transport equipment	86 - 89	1,328,207	1,407,673	1,342,096	369,117	320,633	266,231	386,115
XVIII	Photographic & optical, medical & surgical goods & clocks/watches & musical instruments	90 - 92	194,477	269,133	227,107	56,989	58,769	51,456	59,893
XIX	Arms and ammunition, parts & accessories thereof	93	1,805	5,564	8,365	394	na	na	342
XX	Miscellaneous manufactured articles	94 - 96	272,049	255,707	276,371	51,098	61,627	58,271	105,375
XXI	Works of art, collectors pieces & antiques	97	781	553	548	92	17	98	341
XXII	Others	99	91,398	23,788	25,334	10,226	0	0	3,884
Total			13,800,663	14,833,972	13,507,727	3,451,621	3,197,645	3,070,195	3,769,413

TABLE 3

IMPORTS TO PORT OF DESTINATION
[PGK 000]

PORT	ANNUALLY			Quarterly			
	2011	2012	2013	Quarter 1	Quarter 2	Quarter 3	Quarter 4
Alotau	59,849	58,418	63,706	16,375	15,286	16,512	15,534
Hagen	37,716	36,529	32,941	25,800	6,733	405	3
Kimbe	207,763	191,841	177,876	42,201	55,829	52,892	26,955
Lae	5,009,699	5,750,581	5,406,407	1,368,516	1,286,421	1,286,157	1,465,313
Lihir	1,404,294	818,271	1,081,914	226,325	304,218	209,969	341,402
Madang	250,803	246,457	370,664	77,381	69,421	88,465	135,397
Popondetta	52,113	58,164	32,457	5,016	6,288	13,583	7,571
Port Moresby	6,429,503	7,322,548	5,852,604	1,585,051	1,331,270	1,303,591	1,632,693
Rabaul	293,484	259,054	387,131	92,535	99,971	90,476	104,149
Kiunga	5,379		908			908	
Vanimo	14,797	51,595	53,310	4	16,030	11,857	25,419
Wewak	35,264	40,514	47,808	12,418	10,371	10,042	14,977
Total	13,800,663	14,833,972	13,507,727	3,451,621	3,201,837	3,084,857	3,769,413

TABLE 9 cont.

EXPORTS BY COUNTRY OF DESTINATION
[PGK 000]

Country	ANNUALLY			Quarterly			
	2011	2012	2013	Quarter 1	Quarter 2	Quarter 3	Quarter 4
Republic of Korea	1,084	9,452	1,565	-	1,152	-	413
Romania	na	544	209	-	-	209	-
Russian Federation	22,036	11,476	14,035	5,336	1,413	3,648	3,639
Samoa	461	1,858	407	73	103	104	127
Saudi Arabia	77	42	130	90	40	-	-
Sierra Leone	970	na	na	na	na	na	na
Singapore	1,366,796	1,457,911	215,292	26,400	46,027	69,610	73,255
Slovakia	na	na	61	-	61	-	-
Slovenia	1,877	4,736	702	267	106	43	286
Solomon, Islands	40,207	19,360	25,953	7,519	6,252	6,502	5,679
South Africa	760	99	67	67	-	-	-
Spain	234,078	235,041	219,758	53,699	71,232	60,095	34,731
Sri Lanka	2,280	2,440	3,918	144	1,334	1,243	1,197
Swaziland	3,691	188	1,550	-	515	1,036	-
Sweden	5,762	4,879	492	-	-	-	492
Switzerland	119,621	46,145	50,363	3,776	5,294	27,220	14,073
Taiwan	36,678	38,829	60,613	8,765	8,225	5,606	38,017
Thailand	31,136	57,393	49,355	3,305	10,266	4,328	31,456
Timor Leste	na	24	na	na	na	na	na
Tokelau	na	na	62	-	-	62	-

TABLE 9 cont.

EXPORTS BY COUNTRY OF DESTINATION
[PGK 000]

Country	ANNUALLY			Quarterly			
	2011	2012	2013	Quarter 1	Quarter 2	Quarter 3	Quarter 4
Myanmar	na	20	561	184	187	190	-
Namibia	na	na	16,749	-	-	16,749	-
Netherlands	371,995	433,650	349,676	151,367	55,897	88,753	53,659
Netherlands Antilles	231,653	125,128	47,086	-	20,360	10,773	15,953
New Caledonia	3,245	2,018	2,171	771	502	220	678
New Zealand	41,551	18,702	31,788	5,709	6,581	10,680	8,818
Nicaragua	na	227	944	-	600	-	343
Nigeria	na	25	na	na	na	na	na
Norfolk Island	119	na	722	467	256	-	-
Norway	301	na	0	0	-	-	-
Oman	na	na	1,195	-	-	1,195	-
Pakistan	628	na	247	-	89	70	87
Palau	na	na	33	-	33	-	-
Panama	127	253	na	na	na	na	na
Peru	85	11	2,188	-	2,188	-	-
Philippines	492,932	365,010	362,296	61,194	88,035	75,152	137,915
Pitcairn	na	na	26	-	26	-	-
Poland	1,208	3,746	2,575	1,304	1,271	-	-
Portugal	96	2,967	1,497	1,159	-	338	-

TABLE 4

IMPORTS BY COUNTRY OF ORIGIN
[Kina 000]

COUNTRY	ANNUALLY			Quarterly			
	2011	2012	2013	Quarter 1	Quarter 2	Quarter 3	Quarter 4
Afghanistan	8	4	54	35	13	1	5
Albania	-	226	288	-	-	260	27
Algeria	-	20	-	-	-	-	-
American Samoa	97	76	21	1	6	-	14
Andorra	488	58	362	5	283	51	23
Angola	5,721	3,814	-	-	-	-	-
Anguilla	10,854	106	20	9	-	11	0
ANTARCTICA	6	11	29	-	6	22	-
Antigua and Barbuda	28	100	35	-	13	-	22
Argentina	375	2,820	40	21	-	20	-
Armenia	3	76	-	-	-	-	-
Australia	5,545,492	5,192,013	4,932,099	1,288,248	1,245,046	1,127,693	1,271,113
Austria	2,905	11,643	5,922	1,553	1,699	1,548	1,122
Azerbaijan	-	161	10	-	-	-	10
Bahamas	-	52	182	-	182	-	-
Bahrain	2,242	-	-	-	-	-	-
Bangladesh	6,806	2,441	3,235	446	959	1,401	430
Barbados	252	-	31	-	31	-	-
Belgium	22,185	20,196	26,218	12,676	2,153	3,735	7,654
Belize	23	-	645	645	-	-	-
Bermuda	-	58	68	-	-	60	7
Bolivia (Plurinational State of)	-	117	3	3	-	-	-
Bosnia and Herzegovina	273	-	3	-	-	0	3

TABLE 4 cont

IMPORTS BY COUNTRY OF ORIGIN
[PGK 000]

COUNTRY	ANNUALLY			Quarterly			
	2011	2012	2013	Quarter 1	Quarter 2	Quarter 3	Quarter 4
Brunei Darussalam	48	29	419	11	305	103	-
Bulgaria	190	7	20	-	-	20	0
Cabo Verde	-	3	1	-	1	-	-
Cambodia	42	459	174	127	27	19	1
Cameroon	99	84	37	16	0	13	7
Canada	129,900	74,107	117,736	32,291	55,774	20,474	9,197
Cayman Islands	10	10	24	-	-	24	-
Central African Republic	-	1	223	-	42	-	181
Chile	149	4,723	1,336	80	960	-	295
China	1,045,321	1,182,580	1,382,323	309,131	289,490	356,128	427,574
China, Hong Kong Special Administrative Region	287,638	228,711	262,019	59,724	72,052	61,177	69,066
China, Macao Special Administrative Region	70,347	5	3	-	-	-	3
COCOS (KEELING) ISLANDS	32	67	14	13	0	0	-
Colombia	746	147	93	-	-	-	93
Comoros	-	-	41	41	0	-	-
Cook Islands	50	7	-	-	-	-	-
Costa Rica	10	244	25	9	4	3	9
Croatia	78	2	83	-	-	-	83
Cuba	13	10	222	17	5	91	110
Cyprus	598	1,186	688	191	246	126	125
Czech Republic	792	2,361	2,450	617	917	466	450
Democratic People's Republic of Korea	283,460	278,684	185,021	55,548	29,845	41,270	58,358
Democratic Republic of the Congo	1	180	8	-	-	-	8

TABLE 9 cont.

EXPORTS BY COUNTRY OF DESTINATION
[PGK 000]

Country	ANNUALLY			Quarterly			
	2011	2012	2013	Quarter 1	Quarter 2	Quarter 3	Quarter 4
India	195,304	424,477	173,386	7,973	32,747	128,194	4,472
Indonesia	41,523	88,525	23,659	6,477	5,328	7,356	4,498
Iran (Islamic Republic of)	189	193	na	na	na	na	na
Ireland	699	491	2,713	190	2,323	200	-
Israel	na	na	123	-	-	123	-
Italy	419,714	126,203	191,079	36,984	46,314	42,074	65,707
Japan	913,115	975,315	1,154,441	329,991	354,939	87,712	381,800
Jordan	na	na	40	-	-	-	40
Kenya	na	7	na	na	na	na	na
Kiribati	80	na	na	na	na	na	na
Latvia	1,078	623	na	na	na	na	na
Lithuania	na	na	201	-	103	-	99
Luxembourg	7,716	26,516	69,150	17,917	10,414	26,478	14,341
Madagascar	na	150	141	141	-	-	-
Malaysia	297,733	164,463	171,135	45,292	40,711	46,709	38,423
Malta	554	943	447	-	-	-	447
Marshall Islands	90	180	119	-	59	60	-
Mauritius	na	na	159	-	-	-	159
Mexico	851	1	33	-	33	-	-
Micronesia (Federated States of)	55	98	na	na	na	na	na
Morocco	7,923	na	71	-	71	-	-

TABLE 9 cont.

EXPORTS BY COUNTRY OF DESTINATION
[PGK 000]

Country	ANNUALLY			Quarterly			
	2011	2012	2013	Quarter 1	Quarter 2	Quarter 3	Quarter 4
Croatia	na	314	na	na	na	na	na
Cote d'Ivoire	na	na	239	-	239	-	-
Czech Republic	159	1,889	5	-	5	-	-
Democratic People's Republic of Korea	376,104	255,283	177,534	48,835	30,047	39,352	59,299
Denmark	7,869	4,263	2,553	974	108	231	1,241
Egypt	na	632	8	-	-	8	-
El Salvador	na	na	2,179	-	-	-	2,179
Ethiopia	97	119	na	na	na	na	na
Fiji	3,547	2,655	4,383	1,207	1,250	1,218	708
Finland	645	570	987	-	-	219	768
France	6,217	11,412	80,971	5,479	72,596	1,326	1,569
French Guiana	na	12	na	na	na	na	na
French Polynesia	825	665	na	na	na	na	na
Gambia	89	1,914	80	-	80	-	-
Georgia	3,589	3,073	2	-	2	-	-
Germany	819,098	660,909	349,691	45,601	120,099	104,517	79,474
Greece	na	152	na	na	na	na	na
Guam	173	534	1,758	1,220	-	-	539
Guinea	na	na	28	28	-	-	-
Honduras	1,084	51	235	188	47	-	-
Iceland	94,380	na	163,399	-	-	-	163,399

TABLE 4 cont

IMPORTS BY COUNTRY OF ORIGIN
[Kina 000]

COUNTRY	ANNUALLY			Quarterly			
	2011	2012	2013	Quarter 1	Quarter 2	Quarter 3	Quarter 4
Denmark	32,894	50,136	44,561	11,657	12,887	7,724	12,294
Djibouti	16	14	-	-	-	-	-
Dominica	48	4	159	159	-	-	-
Dominican Republic	2	3	4	-	-	3	0
Ecuador	0	1,396	15	-	-	-	15
Egypt	139	129	1,074	82	91	900	1
El Salvador	4	42	187	95	90	-	2
Equatorial Guinea	-	-	1	-	1	-	-
Estonia	51	18	3,831	4	3	46	3,778
Ethiopia	59	-	37	-	-	-	37
Faeroe Islands	44	-	-	-	-	-	-
Falkland Islands (Malvinas)	-	-	34	24	-	10	-
Fiji	37,844	57,188	56,180	10,066	12,552	16,549	17,014
Finland	10,784	67,885	3,184	474	237	2,379	95
France	103,229	90,813	75,888	29,083	17,737	14,250	14,818
French Guiana	5	-	0	-	-	0	-
French Polynesia	13	-	-	-	-	-	-
Gabon	8	605	1,359	-	-	1,105	253
Gambia	258	1	35	-	9	26	-
Georgia	52	520	88	3	73	8	4
Germany	129,026	140,497	106,120	14,431	29,809	37,489	24,391
Ghana	1,653	10	210	6	0	-	204
Gibraltar	-	-	24	24	-	-	-
Greece	1,707	369	839	108	-	-	732

TABLE 4 cont

IMPORTS BY COUNTRY OF ORIGIN

[PGK 000]

COUNTRY	ANNUALLY			Quarterly			
	2011	2012	2013	Quarter 1	Quarter 2	Quarter 3	Quarter 4
Greenland	69	-	-	-	-	-	-
Grenada	1	-	-	-	-	-	-
Guadeloupe	481	306	2	2	-	-	-
Guam	57	10	5,052	4	15	5,027	7
Guatemala	-	1	4	-	-	4	-
Guinea	-	9	10	-	-	-	10
Haiti	21	4	251	-	104	147	-
Holy See	-	88	-	-	-	-	-
Honduras	1	84	5	-	3	2	-
Hungary	80	289	88	8	6	12	62
Iceland	71,567	631	86,528	13	159	33	86,323
India	73,539	91,569	126,631	23,074	18,393	21,876	63,286
Indonesia	607,558	379,126	349,545	65,811	81,884	105,502	96,349
Iran (Islamic Republic of)	2,364	1	39	-	-	39	-
Iraq	-	-	18	1	-	-	17
Ireland	2,574	3,455	1,075	590	1	238	246
Isle of Man	-	0	-	-	-	-	-
Israel	5,341	6,510	17,097	5,312	5,183	5,922	680
Italy	86,870	682,823	166,242	35,539	48,275	27,620	54,808
Jamaica	65	24	215	57	60	98	-
Japan	602,043	632,340	441,198	125,725	108,858	100,571	106,044
Jordan	48	353	11	-	11	-	-
Kazakhstan	3	4	-	-	-	-	-
Kenya	22	182	105	43	-	60	2
Kiribati	34	12	14	11	4	-	-

TABLE 9

EXPORTS BY COUNTRY OF DESTINATION

[PGK 000]

Country	ANNUALLY			Quarterly			
	2011	2012	2013	Quarter 1	Quarter 2	Quarter 3	Quarter 4
Anguilla	552	78	na	na	na	na	na
Antigua and Barbuda	na	98,428	na	na	na	na	na
American Samoa	na	na	26	26	-	-	-
Argentina	na	na	6	2	4	-	-
Australia	5,587,949	3,491,689	5,261,120	1,218,711	1,054,923	1,509,594	1,477,892
Austria	354	1	4,355	-	1,434	4	2,917
Bahamas	na	na	21	-	-	-	21
Bangladesh	58	na	804	-	-	-	804
Belgium	80,310	68,593	223,225	12,342	84,795	67,489	58,598
Brazil	2,722	696	27	5	13	7	2
Bulgaria	1,791	1,593	6,009	-	-	-	6,009
Cambodia	na	na	192	-	150	-	42
Cameroon	16	17	na	na	na	na	na
Canada	11,661	1,030	11,489	811	-	153	10,526
Chile	na	1,174	18,654	-	-	-	18,654
China	617,319	550,753	798,071	142,878	174,511	178,659	302,023
China, Hong Kong Special Administrative Region	39,948	32,944	28,472	11,073	6,178	5,095	6,126
Colombia	3,674	371	25	25	-	-	-
Congo	707	na	na	na	na	na	na
Cook Islands	na	na	14	-	-	-	14
Costa Rica	252	na	na	na	na	na	na

TABLE 8

EXPORTS BY PORT OF DESPATCH
[PGK 000]

PORT	ANNUALLY			Quarterly			
	2011	2012	2013	Quarter 1	Quarter 2	Quarter 3	Quarter 4
Alotau	98,545	61,127	194,102	92,881	31,652	46,654	22,915
Mt Hagen	52	0	0	0	0	0	0
Kimbe	1,391,561	1,038,861	977,959	222,604	251,991	246,688	256,676
Lae	1,563,469	1,115,728	810,078	160,868	186,413	187,071	275,725
Lihir	2,387,873	1,035,261	2,386,101	478,976	535,871	420,200	951,053
Madang	353,247	287,049	629,090	85,561	127,385	177,556	238,588
Popondetta	344,811	205,491	152,281	9,089	45,067	54,859	43,267
Port Moresby	6,272,717	6,101,813	5,739,000	1,192,752	1,125,858	1,970,972	1,449,418
Rabaul	647,527	244,870	195,657	44,987	54,199	33,955	62,516
Vanimo	53,267	131,172	152,591	14,936	67,237	37,522	32,897
Wewak	151,820	128,340	276,306	73,943	64,458	56,909	80,996
TOTAL	13,264,889	10,349,711	11,513,166	2,376,596	2,490,130	3,232,387	3,414,053

TABLE 4 cont

IMPORTS BY COUNTRY OF ORIGIN
[PGK 000]

COUNTRY	ANNUALLY			Quarterly			
	2011	2012	2013	Quarter 1	Quarter 2	Quarter 3	Quarter 4
Kuwait	56	28	299	299	-	-	-
Kyrgyzstan	734	771	153	147	-	5	-
Lao People's Democratic Republic	17	4	64	3	-	61	-
Latvia	8	1	37	-	37	-	-
Lebanon	146	2	166	4	29	133	-
Lesotho	-	198	-	-	-	-	-
Liberia	-	53	-	-	-	-	-
Libya	-	-	1	1	-	-	-
Liechtenstein	294	143	-	-	-	-	-
Lithuania	177	1	180	-	-	86	94
Luxembourg	262	20	94	-	92	-	1
Madagascar	17	-	-	-	-	-	-
Malaysia	537,001	584,812	781,441	237,311	163,756	135,297	245,077
Maldives	-	311	-	-	-	-	-
Mali	201	29	219	2	194	1	21
Malta	13	46	321	155	31	44	91
Marshall Islands	111	73	90	8	59	12	12
Mauritania	174	140	220	7	-	-	213
Mauritius	1,137	1,018	301	91	-	1	208
Mongolia	36	129	1	1	-	0	-
Montserrat	-	-	1	-	1	-	-
Morocco	79	433	8	-	1	-	7
Mozambique	20	467	161	156	-	5	-
Myanmar	47	8	4	0	-	-	4

TABLE 4 cont

IMPORTS BY COUNTRY OF ORIGIN
[PGK 000]

COUNTRY	ANNUALLY			Quarterly			
	2011	2012	2013	Quarter 1	Quarter 2	Quarter 3	Quarter 4
Namibia	105	15	208	66	101	29	12
Nauru	32	1	0	-	-	0	0
Nepal	48	40	2	-	-	-	2
Netherlands	83,712	70,677	57,609	9,056	11,021	16,024	21,508
Netherlands Antilles	129	2,336	192	58	72	2	61
New Caledonia	100	648	414	10	94	114	194
New Zealand	413,556	483,117	533,954	132,780	128,360	128,949	143,865
Nicaragua	-	2	3	0	3	-	-
Niger	15	43	22	-	18	2	3
Nigeria	591	5	55	-	15	35	5
Niue	4	0	0	0	-	-	-
Norfolk Island	18	-	50	-	-	16	33
Northern Mariana Islands	-	2	-	-	-	-	-
Norway	2,109	12,152	3,944	624	2,468	730	122
Oman	578	2,883	328	-	42	75	211
Pakistan	965	3,855	1,003	293	19	354	337
Panama	136	108	13	0	1	12	-
Papua New Guinea	5,329	34,570	6,795	4,325	307	1,675	487
Peru	7,954	450	1,727	1,666	1	-	61
Philippines	75,982	84,239	78,000	14,403	15,644	20,032	27,920
Pitcairn	1	-	0	-	0	-	-
Poland	2,160	1,022	1,418	536	249	404	228

TABLE 7 cont.

TOTAL EXPORTS BY HS
[PGK 000]

Includes domestic and re-exports

HS Sections	2011	2012	2013	Quarterly			
				Quarter 1	Quarter 2	Quarter 3	Quarter 4
XIII Articles of stone, plaster, cement, glass & ceramic products 68 - 70	198	394	131	41	18	16	56
XIV Pearls, precious & semi-precious stones & metals 71	5,458,493	3,130,066	4,398,080	1,189,054	1,003,725	770,265	1,435,037
XV Base metals & articles thereof 72 - 83	150,576	254,427	399,231	66,332	78,400	88,346	166,154
XVI Machinery & mechanical & electrical appliances & parts thereof 84 - 85	175,191	194,604	288,207	46,950	47,683	47,242	146,332
XVII Vehicles, aircraft & associated transport equipment 86 - 89	930,341	1,271,703	1,779,428	48,379	122,888	1,276,503	331,659
XVIII Photographic & optical, medical & surgical goods & clocks/watches & musical instruments 90 - 92	39,842	23,531	24,621	1,610	7,931	7,783	7,297
XIX Arms and ammunition, parts & accessories thereof 93	-	-	na	na	na	na	na
XX Miscellaneous manufactured articles 94 - 96	463	1,725	2,809	67	966	1,602	174
XXI Works of art, collectors pieces & antiques 97	93	92	77	-	-	2	75
XXII Others 99	37,861	19,676	11,410	3,939	1,826	2,060	3,585
Total	13,264,894	10,349,711	11,513,166	2,376,596	2,490,130	3,232,387	3,414,053

TABLE 7

TOTAL EXPORTS BY HS
[PGK 000]

Includes domestic and re-exports

HS Sections	Annually			Quarterly			
	2011	2012	2013	Quarter 1	Quarter 2	Quarter 3	Quarter 4
I Live animals: animal products 01 - 05	210,746	290,085	390,754	89,636	76,791	56,354	167,972
II Vegetable products 06 - 14	1,037,055	610,409	322,220	68,735	76,099	91,924	85,461
III Animal or vegetable oils & fats 15	1,894,390	1,223,240	1,223,904	294,727	311,761	341,553	275,863
IV Prepared food-stuffs, beverages, spirits & tobacco 16 - 24	582,962	423,952	434,625	88,380	99,228	131,346	115,670
V Mineral products 25 - 27	2,060,388	1,958,263	1,100,262	233,421	322,340	197,993	346,508
VI Chemicals and allied products 28 - 38	44,058	242,262	469,247	110,061	148,931	77,846	132,409
VII Plastic, rubber & articles thereof 39 - 40	67,053	133,382	37,562	6,164	8,177	14,764	8,457
VIII Raw hides, skins, leather articles & travel goods 41 - 43	2,081	1,809	2,188	748	238	512	689
IX Wood, cork & articles thereof & plaiting material 44 - 46	564,015	558,568	621,314	127,143	180,827	125,981	187,363
X Wood pulp, paper & paper-board & articles thereof 47 - 49	6,184	8,753	5,714	906	2,026	73	2,708
XI Textiles & textile articles 50 - 63	2,537	2,382	1,127	254	204	166	504
XII Footwear, head-gear, umbrellas & parts thereof 64 - 67	367	387	253	47	70	57	79

TABLE 4 cont

IMPORTS BY COUNTRY OF ORIGIN
[PGK 000]

COUNTRY	ANNUALLY			Quarterly			
	2011	2012	2013	Quarter 1	Quarter 2	Quarter 3	Quarter 4
Portugal	10	85	24	-	9	0	14
Puerto Rico	-	84	7	-	-	-	7
Qatar	1,372	66	22,737	71	15,461	538	6,667
Republic of Korea	9,236	5,561	3,498	382	2,118	269	729
Romania	97	89	60	1	-	27	32
Russian Federation	6,555	20,447	23,811	220	6,689	14,500	2,402
Saint Helena	107	107	53	3	-	30	19
Samoa	87	308	12	1	5	-	5
Sao Tome and Principe	10	-	-	-	-	-	-
Saudi Arabia	3,233	978	28,925	268	1,329	458	26,870
Senegal	8,893	85	-	-	-	-	-
Serbia	0	13	11	2	8	0	1
Seychelles	20	0	-	-	-	-	-
Sierra Leone	34	9	57	27	30	-	-
Singapore	1,581,990	2,006,460	1,881,892	503,883	481,059	361,031	535,919
Slovakia	296	40	140	8	5	10	117
Slovenia	171	327	73	9	17	29	18
Solomon, Islands	2,493	8,564	3,255	316	309	1,415	1,214
Somalia	2	4	12	12	-	-	-
South Africa	83,053	9,369	4,176	935	622	1,493	1,126
Spain	17,755	77,507	81,436	72,693	3,116	3,671	1,956
Sri Lanka	18,759	1,668	5,923	453	1,508	2,899	1,063
St. Kitts and Nevis	20	-	-	-	-	-	-
Sudan	516	13	38	3	31	0	4

TABLE 4 cont

IMPORTS BY COUNTRY OF ORIGIN
[PGK 000]

COUNTRY	ANNUALLY			Quarterly			
	2011	2012	2013	Quarter 1	Quarter 2	Quarter 3	Quarter 4
Suriname	5	-	0	0	-	-	-
Swaziland	694	3,192	22,306	796	155	17,156	4,199
Sweden	39,062	30,908	64,985	5,525	15,288	27,972	16,200
Switzerland	11,225	32,234	5,852	1,657	1,243	1,372	1,581
Syrian Arab Republic	-	339	2	-	2	-	-
Taiwan	163,511	177,502	283,518	62,200	25,990	81,467	113,860
Thailand	395,291	512,584	332,914	90,012	84,947	79,097	78,858
The former Yugoslav Republic of Macedonia	3	-	-	-	-	-	-
Timor Leste	2	86	-	-	-	-	-
Tokelau	1	0	32	-	-	27	5
Tonga	-	39	2	2	-	-	-
Trinidad and Tobago	12	-	8	-	-	3	4
Tunisia	1	1,324	43	43	-	-	-
Turkey	6,669	6,481	11,764	4,044	4,099	2,193	1,428
Turkmenistan	-	6	-	-	-	-	-
Tuvalu	3	-	11	-	1	10	-
Uganda	-	1	4	-	-	4	-
Ukraine	622	1,031	616	80	65	31	440
United Arab Emirates	70,414	133,703	44,457	10,200	4,598	16,817	12,842
United Kingdom of Great Britain and Northern Ireland	138,929	158,268	154,323	49,568	45,876	30,972	27,907
United Republic of Tanzania	-	365	454	3	-	-	450
United States of America	810,528	1,008,473	577,278	134,780	133,882	158,639	149,977
United States Virgin Islands	9	-	-	-	-	-	-

TABLE 6 cont.

RE-EXPORTS BY HS
[PGK 000]

HS Sections	Annually			Quarterly				
	2011	2012	2013	Quarter 1	Quarter 2	Quarter 3	Quarter 4	
XV Base metals & articles thereof	72 - 83	547	2,075	2,081	269	600	46	1,166
XVI Machinery & mechanical & electrical appliances & parts thereof	84 - 85	33,878	36,103	101,741	9,816	1,359	2,328	88,237
XVII Vehicles, aircraft & associated transport equipment	86 - 89	596,647	1,151,844	369,712	28,364	99,242	57,115	184,992
XVIII Photographic & optical, medical & surgical goods & clocks/watches & musical instruments	90 - 92	11,362	7,832	8,167	941	1,151	4,811	1,263
XIX Arms and ammunition, parts & accessories thereof	93	0	0	na	na	na	na	na
XX Miscellaneous manufactured articles	94 - 96	27	11	95	45	na	33	17
XXI Works of art, collectors pieces & antiques	97	0	0	na	na	na	na	na
XXII Others	99	0	0	0	na	na	0	na
Total		642,488	1,198,411	481,938	39,473	102,419	64,338	275,708

TABLE 6

RE-EXPORTS BY HS
[PGK 000]

HS Sections	Annually			Quarterly			
	2011	2012	2013	Quarter 1	Quarter 2	Quarter 3	Quarter 4
I Live animals: animal products 01 -05	0	0	na	na	na	na	na
II Vegetable products 06 -14	0	0	na	na	na	na	na
III Animal or vegetable oils & fats 15	0	0	na	na	na	na	na
IV Prepared foodstuffs, beverages, spirits & tobacco 16 - 24	0	0	na	na	na	na	na
V Mineral products 25 - 27	0	0	0	na	na	na	0
VI Chemicals and allied products 28 - 38	0	420	0	na	na	na	0
VII Plastic, rubber & articles thereof 39 - 40	14	107	74	4	59	3	8
VIII Raw hides, skins, leather articles & travel goods 41 - 43	0	0	1	na	na	1	na
IX Wood, cork & articles thereof & plaiting material 44 - 46	5	0	na	na	na	na	na
X Wood pulp, paper & paper-board & articles thereof 47 - 49	0	0	34	34	0	na	na
XI Textiles & textile articles 50 - 63	7	15	0	na	na	na	0
XII Footwear, headgear, umbrellas & parts thereof 64 - 67	0	5	na	na	na	na	na
XIII Articles of stone, plaster, cement, glass & ceramic products 68 - 70	0	0	32	na	7	na	25
XIV Pearls, precious & semi-precious stones & metals 71	0	0	na	na	na	na	na

TABLE 4 cont

IMPORTS BY COUNTRY OF ORIGIN
[PGK 000]

COUNTRY	ANNUALLY			Quarterly			
	2011	2012	2013	Quarter 1	Quarter 2	Quarter 3	Quarter 4
Unknown	1	25	29	-	17	6	6
Uruguay	1,338	48	145	14	-	-	132
Vanuatu	3,400	2,617	3,384	695	863	918	908
Venezuela (Bolivarian Republic of)	40	11	-	-	-	-	-
Vietnam	83,439	83,046	52,401	22,400	10,608	12,186	7,207
Yemen	-	11	2	-	-	-	2
Zambia	-	-	212	-	-	15	197
Zimbabwe	-	149	8	-	8	-	-
Total	13,800,663	14,833,972	13,507,727	3,451,621	3,201,837	3,084,856	3,769,413

TABLE 5

DOMESTIC EXPORTS BY HS

[PGK 000]

Annually

Quarterly

HS Sections		2011	2012	2013	Quarter 1	Quarter 2	Quarter 3	Quarter 4	
I	Live animals: animal products	01 - 05	210,746	290,085	390,754	89,636	76,791	56,354	167,972
II	Vegetable products	06 - 14	1,037,055	610,409	322,220	68,735	76,099	91,924	85,461
III	Animal or vegetable oils & fats	15	1,894,390	1,223,240	1,223,904	294,727	311,761	341,553	275,863
IV	Prepared foodstuffs, beverages, spirits & tobacco	16 - 24	582,962	423,952	434,625	88,380	99,228	131,346	115,670
V	Mineral products	25 - 27	2,060,388	1,958,263	1,100,262	233,421	322,340	197,993	346,508
VI	Chemicals and allied products	28 - 38	44,058	241,842	469,247	110,061	148,931	77,846	132,409
VII	Plastic, rubber & articles thereof	39 - 40	67,039	133,276	37,489	6,160	8,118	14,761	8,449
VIII	Raw hides, skins, leather articles & travel goods	41 - 43	2,081	1,809	2,187	748	238	511	689
IX	Wood, cork & articles thereof & plaiting material	44 - 46	564,010	558,568	621,314	127,143	180,827	125,981	187,363
X	Wood pulp, paper & paperboard & articles thereof	47 - 49	6,183	8,753	5,680	872	2,026	73	2,708
XI	Textiles & textile articles	50 - 63	2,530	2,367	1,127	254	204	166	504
XII	Footwear, headgear, umbrellas & parts thereof	64 - 67	367	382	253	47	70	57	79
XIII	Articles of stone, plaster, cement, glass & ceramic products	68 - 70	198	394	99	41	11	16	31
XIV	Pearls, precious & semi-precious stones & metals	71	5,458,493	3,130,066	4,398,080	1,189,054	1,003,725	770,265	1,435,037
XV	Base metals & articles thereof	72 - 83	150,029	252,351	397,151	66,063	77,800	88,300	164,988
XVI	Machinery & mechanical & electrical appliances & parts thereof	84 - 85	141,313	158,501	186,467	37,133	46,324	44,914	58,095

TABLE 5 cont.

DOMESTIC EXPORTS BY HS

[PGK 000]

Annually

Quarterly

HS Sections		2011	2012	2013	Quarter 1	Quarter 2	Quarter 3	Quarter 4	
XVII	Vehicles, aircraft & associated transport equipment	86 - 89	333,694	119,860	1,409,716	20,016	23,646	1,219,388	146,667
XVIII	Photographic & optical, medical & surgical goods & clocks/watches & musical instruments	90 - 92	28,479	15,700	16,454	669	6,780	2,972	6,034
XIX	Arms and ammunition, parts & accessories thereof	93	0	0	na	na	na	na	na
XX	Miscellaneous manufactured articles	94 - 96	436	1,714	2,714	22	966	1,569	157
XXI	Works of art, collectors pieces & antiques	97	93	92	77	na	na	2	75
XXII	Others	99	37,861	19,676	11,409	3,939	1,826	2,059	3,585
Total			12,622,406	9,151,300	11,031,227	2,337,123	2,387,711	3,168,049	3,138,344